

GA2 Tool Operated Compression Latch

Features

- Intended for use with heavy gaskets and seals, so that when locked, the cam pawl is drawn up by 6 mm and is held firmly in place
- Key operates plug, bringing latch into 'closed' position and then drawing up against seal
- Very positive engagement against vibration, water-sealed and adjustable
- Cam pawl is rotated 90 degrees only, then withdraws by 6 mm. Adjustment of latch through 20 mm
- Mounted within an industry-standard 4-sided panel aperture
- 7mm square drive plug
- Smart die cast key with provision for customer's identity logo

Material

- Body: Steel, chromium plated or black powder coated
- Nut: Brass
- Spring-washer: Stainless steel

Notes

- Straight cam pawl as standard, with a full range of other options available
- Square die cast key **G00729** sold separately

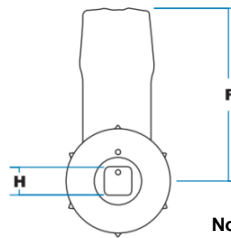
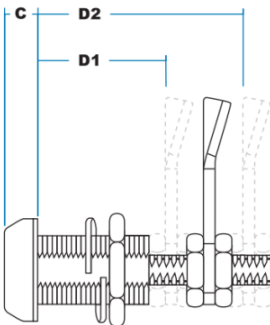
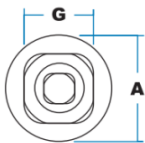


GA2-G00114B

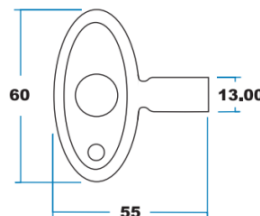
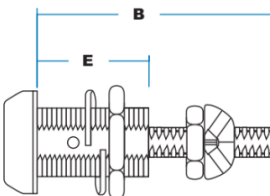


G00729

Diecast key has recess for custom company logo disc, and can be finished in black or other colours on special order



Note: Dots and cam pawl to line up when in compression position



Part No.	Finish	A	B	C	D1	D2	E	F	G	H	I
GA2-G00114	Chrome	29	65.5	8	36	56.4	32	47.6	18.8	7	6
GA2-G00114B	Black										

Cam Form and Multi-Point Cam Pawls

Features

- These pawls are in 3 mm thick mild steel, zinc plated with 8 mm square hole
- Cam-form types have a 4 mm 'leading edge' for good engagement. They can be used with most of our compartment locks, 'Compact' and 'Turn-button' models, and also with handles having 8 mm square shaft, as illustrated below.

Cam-Form Cam Pawls



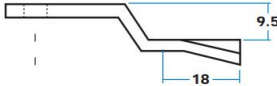
G00276



G00275



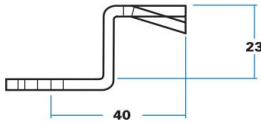
G00097



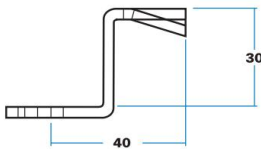
Cam-Form Cam Pawls



G02706
(Raised 23 mm)



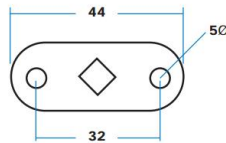
G02721
(Raised 30 mm)



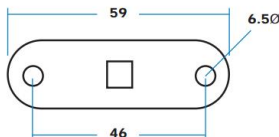
Two-Point Cam Pawls



G00508 (illustrated)
G01911 (with in-line square)



G00789 (illustrated)
G01389 (with square at 45° to centre line)



Cam Pawl Fitted To Locking Handles



The 8 mm shaft is threaded M10 so that square form is retained. Cam Pawl can be adjusted using nut (GMP00221) and locknut (GMP00220) illustrated